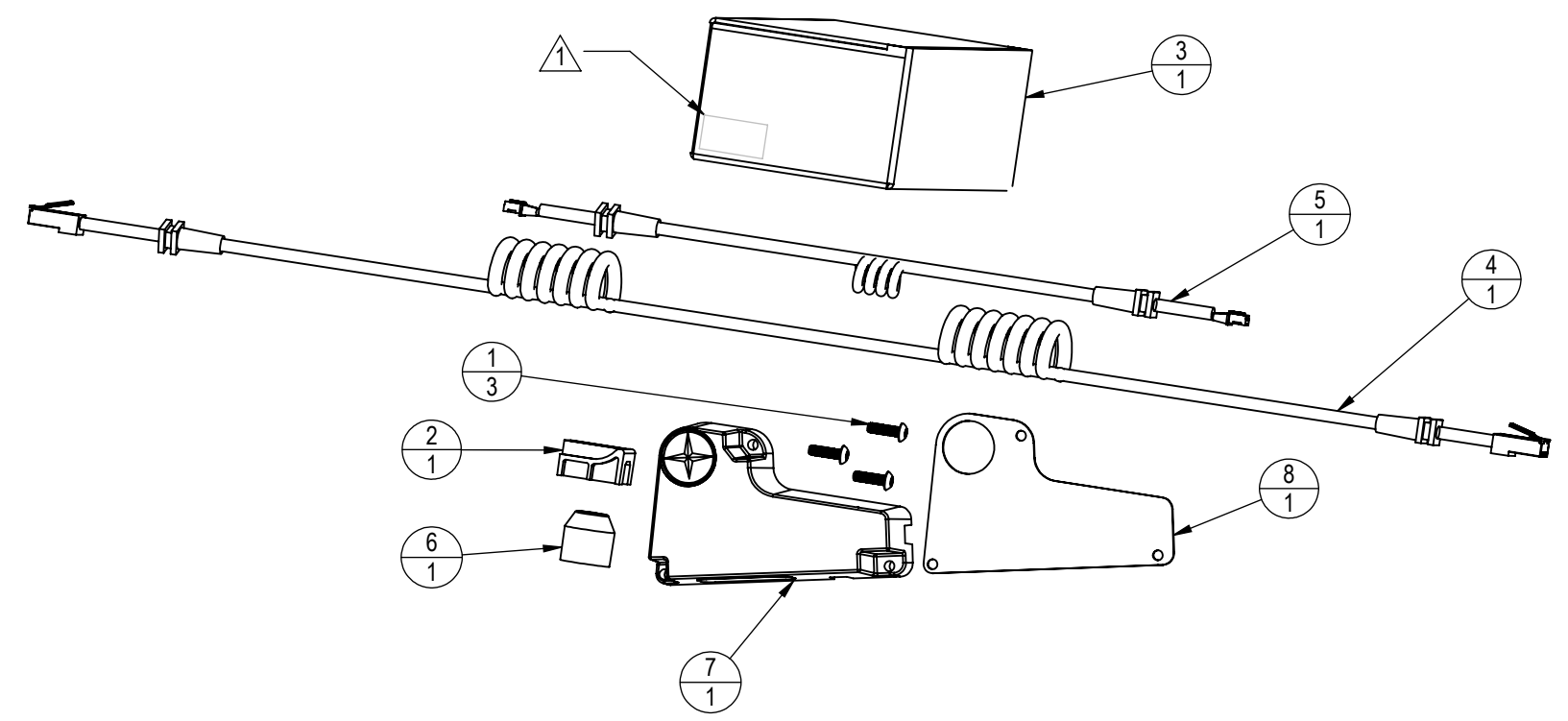


- NOTES:
1. LABEL WITH:
 - a. CORE H&F PART NUMBER
 - b. DESCRIPTION
 - c. DATE OF MANUFACTURE
 - d. P/O NUMBER
 - e. VENDOR INFORMATION

REVISION HISTORY				
REV	DATE	DESCRIPTION	ECO	BY
A	7/22/2014	RELEASE FOR QUOTATION	14728	OT
B	10/17/2014	ADD DIM TO RJ45 CABLE END, ADD DIM TO 2 PIN CABLE END, CHANGE MAG HOLDER, ADD CALIBRATION TOOL, CHANGE CASING AND SENSOR PCB ASSY	14817	OT



ITEM NO.	PART NUMBER	DESCRIPTION	QTY.
1	110-3644	SCREW, M4X0.7X14, BHSC,HE,SS	3
2	740-8607	CALIBRATION TOOL, ZERO POINT, ACPP	1
3	740-8730-005	POWER SENSOR UPGRADE PACKAGING	1
4	740-8931	POWER UPGRADE CABLE, RJ45	1
5	740-8932	2-PIN SHORT SPEED SENSOR CABLE	1
6	740-8933	ASSY, MAGNET, SENSOR, ECH 2	1
7	740-8934	ASSY, ECH2 POWER	1
8	740-8935	PAD,RUBBER,POWER SENSOR	1

DOCUMENT STATUS:

NOTICE OF PROPRIETARY INFORMATION
THIS DOCUMENT SHALL NOT BE REPRODUCED NOR SHALL THE INFORMATION CONTAINED HEREIN BE USED BY OR DISCLOSED TO OTHER EXCEPT AS EXPRESSLY AUTHORIZED BY CORE HEALTH & FITNESS, LLC.

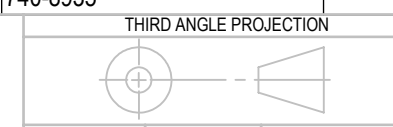
CLASS OF WORK	UNLESS OTHERWISE SPECIFIED DIMS ARE IN mm. TOLERANCES FOR MEASURE OF LENGTH ARE:							ANGLES = ±2°
	0.5 to 3	> 3 to 6	> 6 to 30	> 30 to 120	> 120 to 400	> 400 to 1000	> 1000 to 2000	
FINE	±0.05	±0.05	±0.1	±0.15	±0.2	±0.3	±0.5	----
MEDIUM	±0.1	±0.1	±0.2	±0.3	±0.5	±0.8	±1.2	±2
COARSE	±0.2	±0.3	±0.5	±0.8	±1.2	±2	±3	±4
VERY COARSE	----	±0.5	±1	±1.5	±2.5	±4	±6	±8

MATERIAL
SEE BOM

FINISH
SEE BOM

VENDOR: N/A

P/N: N/A



DRAWN	INITIAL OT	DATE 7/22/2014
CHECKED		
APPROVED		
	U.O.M.	MM

CORE HEALTH & FITNESS, LLC
4400 NE 77th Ave., Suite 300
Vancouver, WA 98662

CORE PART NO: **740-8730** REV: **B**

TITLE: **SCHWINN ECHELON 2 POWER UPGRADE**

SCALE: 1:3 | SHEET 1 OF 1 | SHEET SIZE: B